

Town Green Playground

What we've heard

You want more equipment

We've added tele tubes, 3 bay swings which includes a 'you and me' swing, carousel, springers, and balance trail. Additions to the main play element include a small slide, rope tunnel climb, and large tunnel slide.

You want more accessible equipment and features

We have added an accessible carousel and accessible small slide in main play element. Concrete path and rubber softfall will allow easy access throughout playground.

You want better seating for all ages and abilities

We have added bench seating and backrest seating accessible for older adults and people living with a disability.

You have concerns about safety and visibility

The main play structure includes net barriers, battens, and a perforated wall to increase transparency. As Town Green is a well-lit area and with the increased visibility of the main play element, greater passive surveillance is afforded to ensure safety in this space. The sandstone block wall acts as fencing, as well as the soft barrier provided by the gardens.

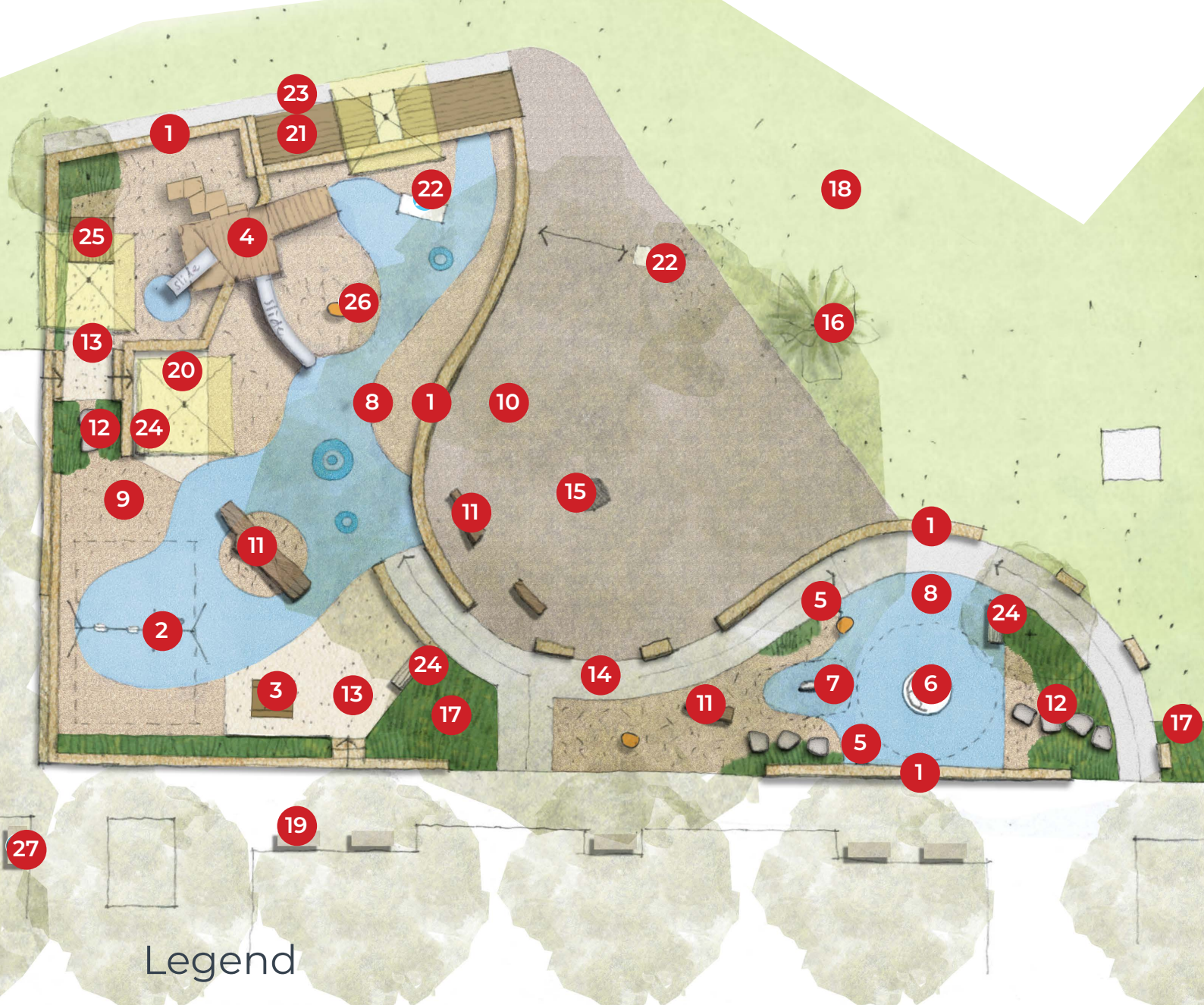
You said there is a lack of shade

Large shade sails require significant depth footings which would impact existing heritage layers. Additional shade coverage has been provided by the umbrellas/shelters and the existing Fig tree provides significant shade over the whole play space.

You have concerns over size and height of the main play element

The main play element has been reduced in size and relocated to the western side of the Fig tree.





Legend

1. Sandstone block wall for retaining and seating
2. 2 swings and a 'you and me' seat swing
3. Picnic table
4. Main feature play element with slides (small & large)
5. Listening / talking tubes
6. Accessible carousel
7. Springer
8. Rubber softfall
9. Softfall mulch
10. Mulch area
11. Locally sourced natural timber logs- balance trail and informal seating
12. Stone steppers through garden
13. Decomposed granite
14. New concrete path
15. Existing Fig tree to be retained
16. Existing Palm tree to be retained
17. Planting area
18. Turf area
19. Existing backrest seats to be retained
20. Umbrella or shelter
21. Timber seating deck- reclaimed bridge timbers- providing a connection between play and park
22. Pipe play elements in mulch
23. Concrete strip to base of wall and refined deck area
24. New backrest seat
25. Timber platform seat
26. Feature animal themed timber sculptures
27. Bin location



pmhc.nsw.gov.au/town-green-playground